

# LALA METAL

## SOLAR ROOFING TILE

- 新型光伏绿色建材 可代替传统  
Solar Roofing Tile as the New Type of Building Materials Provide Green Energy for You
- 为城市更新和美丽乡村提供绿色零碳能源  
One-Stop Solution Home Usings, Roofing Tile and Solar Energy Intergrate



### 产品轻质 Product Light

降低屋面荷载 | 易安装  
Reduce roof load | Easy to install



### 卓越性能 Excellent Performance

三重防水设计 | 隔音降噪 | 通风散热  
Triple waterproof | Noise reduction | Ventilation and heat dissipation



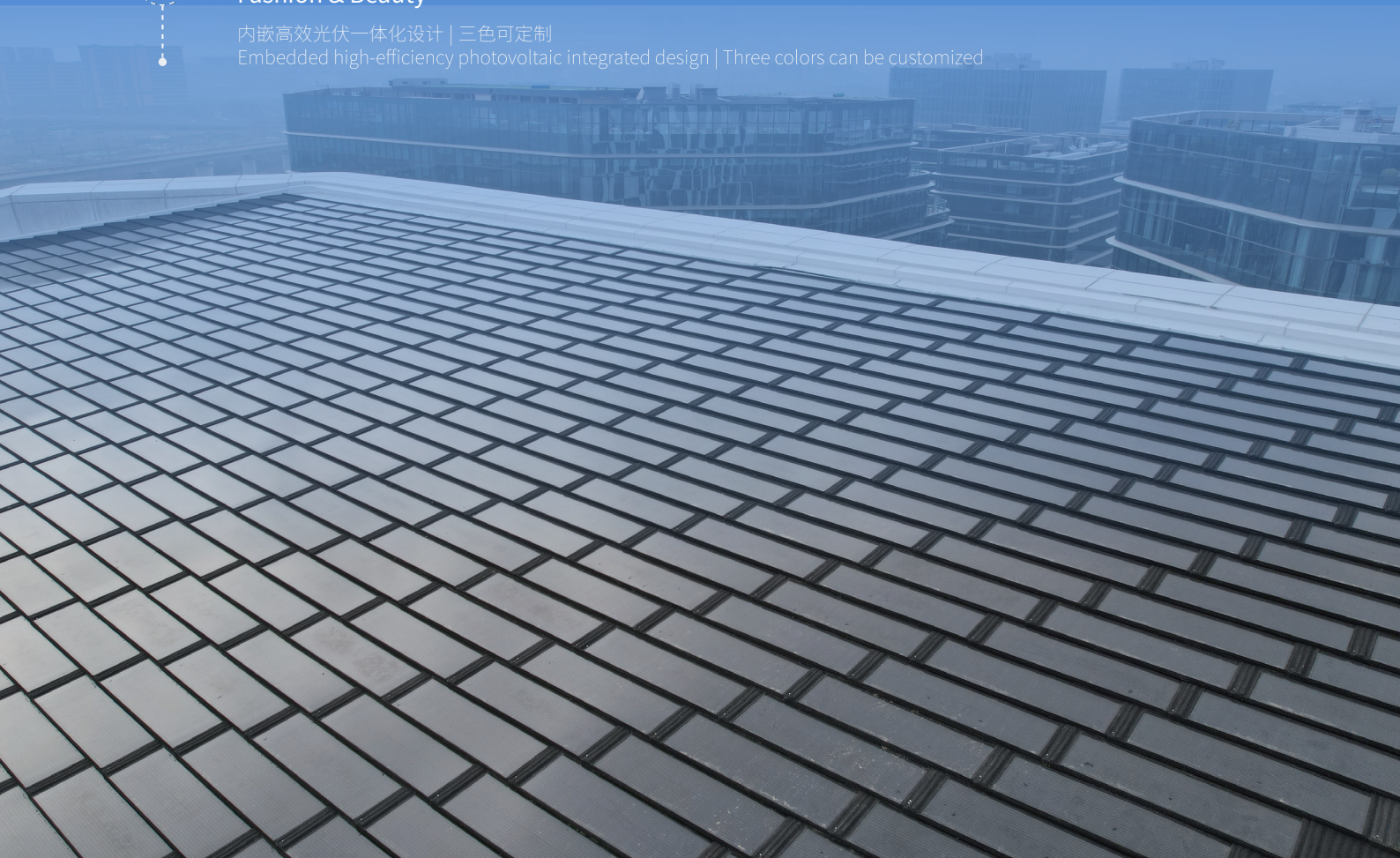
### 安全可靠 Safe and Reliable

Class A 级防火 | 与建筑同寿命  
Fireproof ClassA | Same life as the building



### 时尚美观 Fashion & Beauty

内嵌高效光伏一体化设计 | 三色可定制  
Embedded high-efficiency photovoltaic integrated design | Three colors can be customized



## 物理参数 PHYSICAL PARAMETERS

产品颜色 Color	黑色/Black	红色/Red (JSA01-202)
产品型号 Product model	JS80CB-26	JS65CB-26
瓦片尺寸 Dimensions	1340*420mm	
外露尺寸 Effective Size	1260*370mm	
瓦片重量 Weight	6.5kg	
电池尺寸 Solar Cell Type	166*83mm(2*13)	
接线盒 Junction box	≥IP67	
电缆类型 Cable type	900mm / 4m <sup>2</sup>	
玻璃(材料/厚度) Glass (material/thickness)	低铁钢化玻璃/Tempered glass 3.2mm+背板/Backsheet	
电缆连接器 Plug connector	MC4	
使用年限 Life span	>30年	

## 标准测试条件下的电性能参数 (STC)

芯片类型 Solar cells	单晶硅/Monocrystalline	
峰值功率 (P <sub>max</sub> ) Power output (P <sub>max</sub> )	80W	65W
组件效率 (%) Module efficiency (%)	19.4%	15.7%
峰值功率电压 (V <sub>mpp</sub> ) Voltage at Pmax (V <sub>mpp</sub> )	15.10V	14.70V
峰值功率电流 (I <sub>mpp</sub> ) Current at Pmax (I <sub>mpp</sub> )	5.30A	4.42A
开路电压 (V <sub>oc</sub> ) Open-circuit current (V <sub>oc</sub> )	18.20V	17.60V
短路电流 (I <sub>sc</sub> ) Short-circuit current (I <sub>sc</sub> )	5.61A	4.68A

STC: 辐照度1000W/m<sup>2</sup>, 电池温度25°C, 大气质量AM1.5.  
STC: 1000W/m<sup>2</sup> irradiance, 25 degree cell temperature, AM1.5g.

## 运行条件 OPERATING CONDITIONS

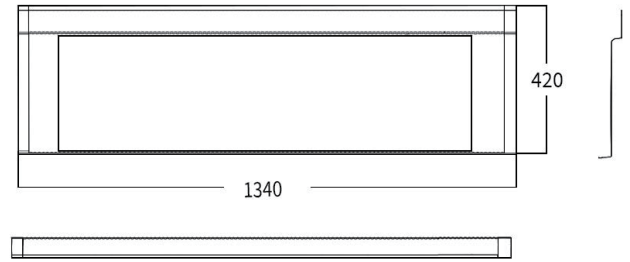
最大系统电压 Max. system voltage	1500V <sub>DC</sub>
最大保险丝额定值 Max. series fuse rating	16A
工作温度 Operating temperature range	-40°C至+85°C
正面最大静载荷(雪载荷和风载荷) Max. static load, front (e.g., snow)	5400Pa
背面最大静载荷(风载荷) Max. static load, back (e.g., wind)	2400Pa
冰雹测试(冰雹直径 / 撞击速度) Max. hailstone impact (diameter / velocity)	25mm / 23m/s

由于持续的创新、研究和产品升级, 此产品规格书中的内容可以在不提前通知的情况下进行更改。这些内容可能会有轻微的偏差, 请以实物为准。

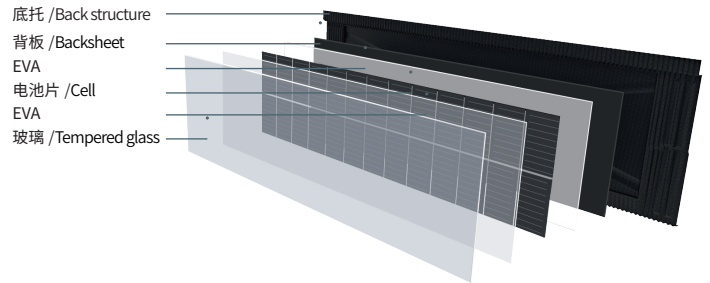
这些数据并不是针对单一的组件, 它们也不是销售的一部分, 它们只是用来不同型号组件之间的对比。

## 产品尺寸 DIMENSIONS

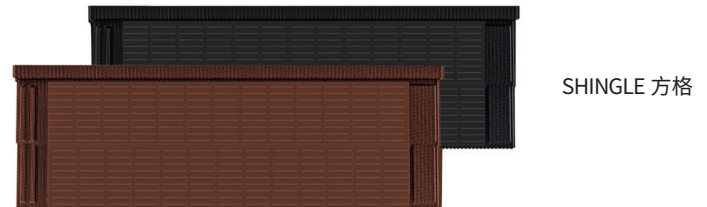
单位/Unit : mm



## 产品结构 STRUCTURE



## 产品展示 PRODUCT PICTURE



## 温度特性 THERMAL CHARACTERISTICS

标称工作温度 Nominal operating cell temperature	NOCT	°C	45±2
峰值功率(P <sub>max</sub> )的温度系数 Temperature coefficient of (P <sub>max</sub> )	γ	%/°C	-0.36
开路电压(V <sub>oc</sub> )的温度系数 Temperature coefficient of (V <sub>oc</sub> )	β <sub>Voc</sub>	%/°C	-0.30
短路电流(I <sub>sc</sub> )的温度系数 Temperature coefficient of (I <sub>sc</sub> )	α <sub>Isc</sub>	%/°C	0.05

Due to continuous innovation, research and product improvement, the specifications in this product information sheet are subject to change without prior notice. The specifications may deviate slightly and are not guaranteed. The data do not refer to a single module and they are not part of the offer, they only serve for comparison to different module types.

## Shandong Lala Metal Products Co.,Ltd

Email: chunlei@sinogrp.com

Whatsapp: +8613705495251

Website: www.sinogrp.com

Address: Rm1103, A10Building, Lushang Center, Guangzhou Road, Lanshan District, Linyi City, Shandong Province, China

## 山东拉拉金属制品有限公司

电话: +8613705495251

地址: 山东省临沂市兰山区鲁商中心A10

网址: www.sinogrp.com